

A VISION
AHEAD



HOW TO READ THE PRODUCT KEY

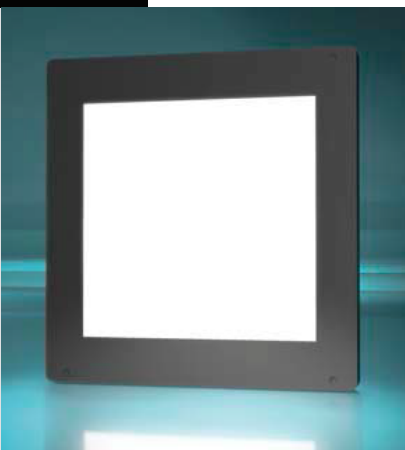
Manufacturer Source colour Light Output Area/Length Injection process Input voltage
PHLOX - LEDW - BL 100x100 - HSCAT - Q - 1R - 24V-V2
Source type Product type Range Number of light sources' rows per cicu

PHLOX® EXCLUSIVE LIGHT PROCESS
WORLDWIDE PATENT ISSUED

NEW!

HSCAT (High Speed Camera) White led Backlight 100x100 +Power supply

00000686:PHLOX-LEDW-BL-100x100-HSCAT-Q-1R-24V-V2



Illumination

Luminance minimum

Uniformity minimum

Source Type

Colour Temperature

Light Angular Distribution

Expected Life

≥161 000 cd/m² continuous mode

≥95% (+/- 10%)

White LED

5700°K (+/-500)

30° 1/2 angle (**less stray light**)

> 20 000 hours

Scan for DS
and 3D Files !



Electrical

Input Voltage

Input Current

Cable length

Connector

24 VDC (continuous mode)

≤2.2 A (continuous mode)

4.1 M (±0.1m)– (13.45 ft ±0.33) including power supply

XLR3 male on backlight/ XLR3 female on power supply

Yes

Max. Cur: 14A / Pulse Width: 10ms / Duty Ratio: 1/10

CE Conformity

Strobe mode

Power supply (included)

MeanWell 24V, 2.5A (GST60A24-P1J)*

Outer unit

L x W x H

234.4 x 182 x 33 mm (9.23 x 7.16 x 1.30")
(handle and anchoring device included)

Housing Material

Black Anodized Aluminium

Weight backlight

860 g (30.3 oz)

Environmental

Max. Operating Humidity

95% non-condensing

Operating Temperature

40°C (104°F) max

Storage Temperature

50°C (122°F) max

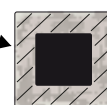
Shelf life

12 months from date of purchase

Max.temp.on housing

110°C (+230°F) max

30mm all along the edges of the back of
the black anodized aluminium housing
(see image)



Do not cover the backlight when it's switched on.

Accessories

LED Dimmer : 28V-5A very compact and easy to use

Product key: PHLOX DIM LIGHT



LED Strober 48V - 5A (up to 40A in pulse mode)

Pulse width between 2µs and 10ms

Product key: PHLOX STROBE LIGHT



DESIGNED FOR YOUR APPLICATION

Shadowgraphy, Particle analysis, Ballistics, Spray analysis (water, paint, fuel, etc...)

Droplet impactation, Bubble formation, Powder, solid particles, Emulsions and dispersions

Welding, Liquid interface

RoHS directive compliant

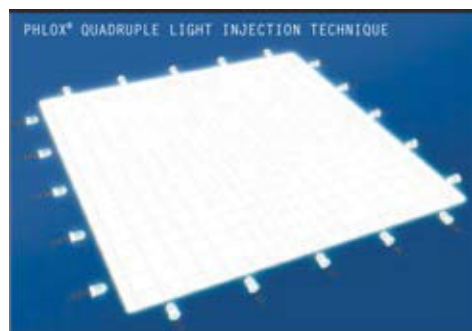
CLASS 0: NO RISK (CIE S2009:2002/NF EN 62471)

Each PHLOX Backlight is provided with:

- 24 months warranty
- Certificate of uniformity and luminance
- Seal of quality on the back

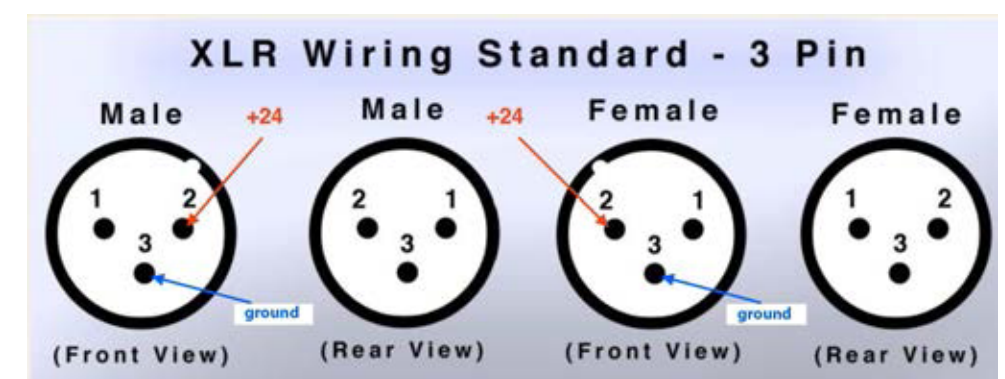
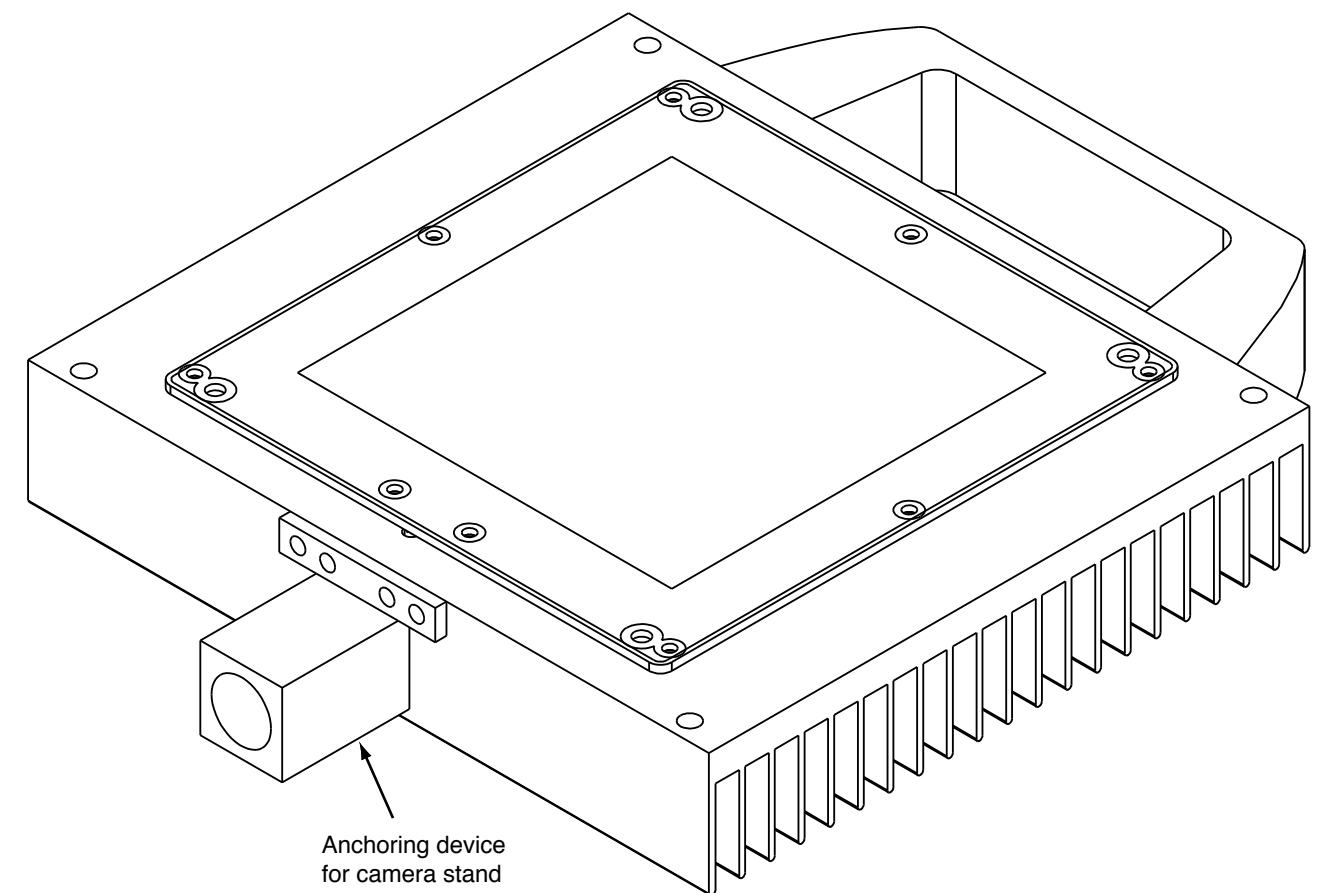
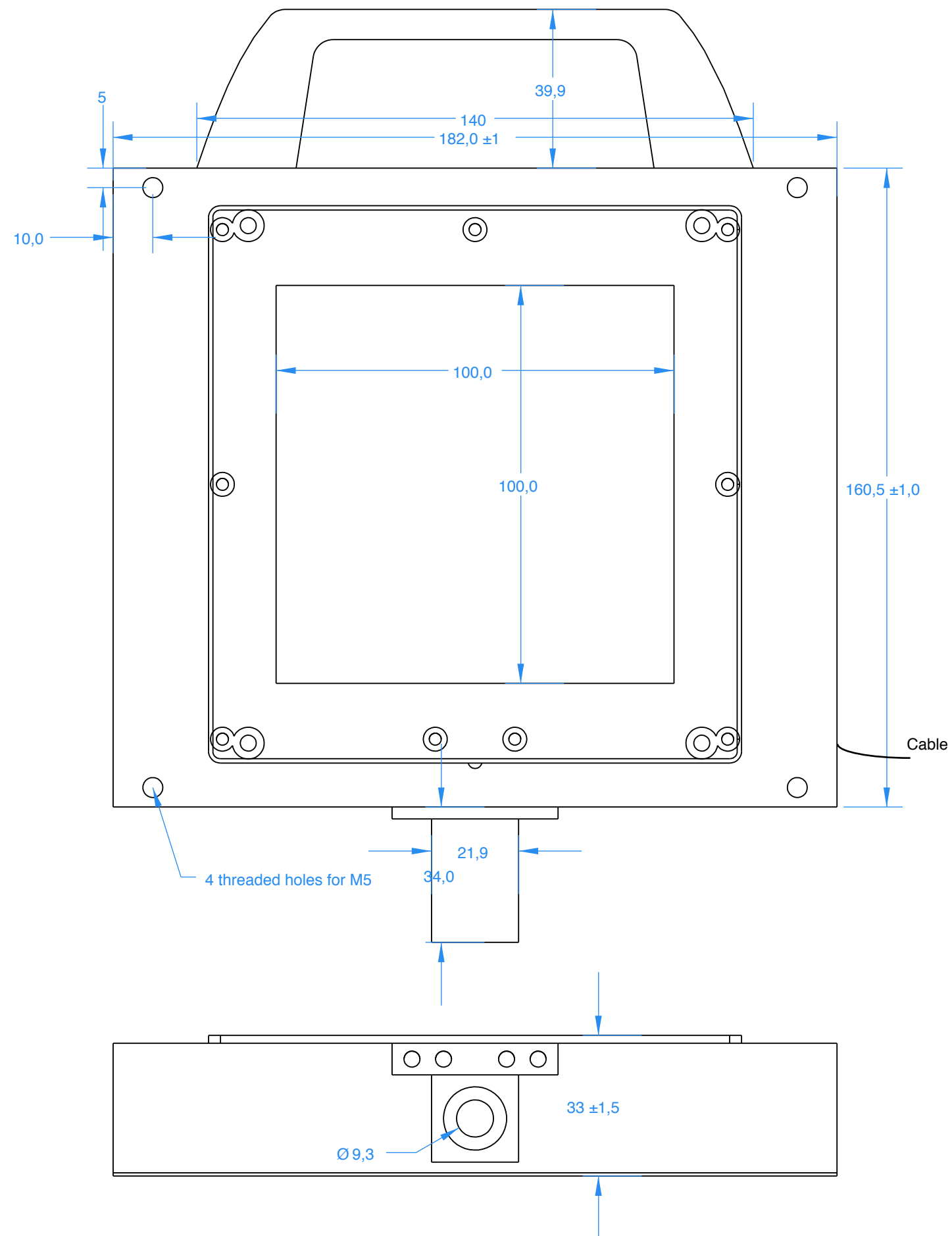
November 9th, 2022

HSC Backlights by PHLOX®, designed for the Phantom®High Speed Camera offer the best luminance on the market.



INNOVATION

PHLOX® uses optical processes: a PMMA pipe lighted by a linear source made up of LED (Light Emitting Diodes). Our manufacturing process (CO2 laser) enables us to combine refraction and diffusion which improves backlight luminance. Up to 90% of the light injected can be reemitted on the surface. Thanks to the use of mathematical models, PHLOX® emits light in a determinist and perfectly controlled manner



PROPRIÉTÉ DE PHLOX SA- REPRODUCTION INTERDITE SAUF ACCORD ÉCRIT	
00000686 : PHLOX-LEDW-BL-100X100-HSCAT-Q-1R-24V-V2	
TEL: +33 (0) 4 42 90 76 20	PHLOX