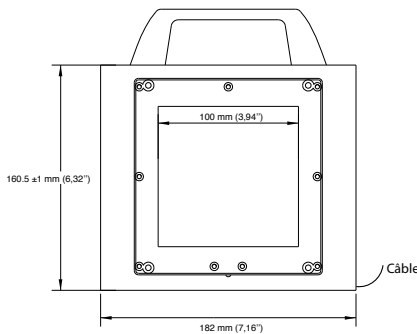
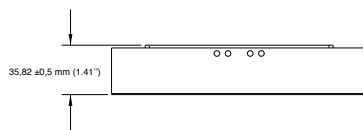


NEW!

HSC (High Speed Camera) White led Backlight 100x100


PHLOX - LEDW - BL - 100x100 - HSC - Q - 1R - 24V



Illumination

Luminance minimum	≥130 000 cd/m ² continuous mode
Uniformity minimum	≥95% (+/- 10%)
Source Type	White LED
Colour Temperature	5700°K (+/-500)
Light Angular Distribution	30° 1/2 angle
Expected Life	> 20 000 hours

Electrical

Input Voltage	24 VDC (continuous mode)
Input Current	≤2.2 A (continuous mode)
Cable length	0.5 M – Ø 3,6 mm (1.64 ft – Ø 0.142")
Connector	None
Cable pinout	
CE Conformity	Yes
Strobe mode	Max. Cur: 14A / Pulse Width: 10ms / Duty Ratio: 1/10

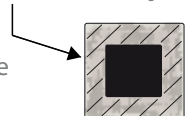
Outer unit

L x W x H	160.5 x 182 x 35,82 mm (6.32 x 7.16 x 1.41") without handle
Housing Material	Black Anodized Aluminium
Weight	860 g (30.3 oz)

Environmental

Max. Operating Humidity	95% non-condensing
Operating Temperature	40°C (104°F) max
Storage Temperature	50°C (122°F) max
Shelf life	12 months from date of purchase
Max.temp.on housing	110°C (+230°F) max

area of temperature measurement
30mm all along the edges of the back of
the black anodized aluminium housing
(see image)



Do not cover the backlight when it's switched on.

Accessories

LED Dimmer 28V-5A very compact and easy to use
Product key: PHLOX DIM LIGHT

LED Strober 48V - 5A (up to 40A in pulse mode)
Pulse width between 2µs and 10ms
Product key: PHLOX STROBE LIGHT



Backlight+power supply : Ask for «HSCAT» version

DESIGNED FOR YOUR APPLICATION

Shadowgraphy, Particle analysis, Ballistics, Spray analysis (water, paint, fuel, etc...)
Droplet impaction, Bubble formation, Powder, solid particles, Emulsions and dispersions
Welding, Liquid interface

RoHS directive compliant

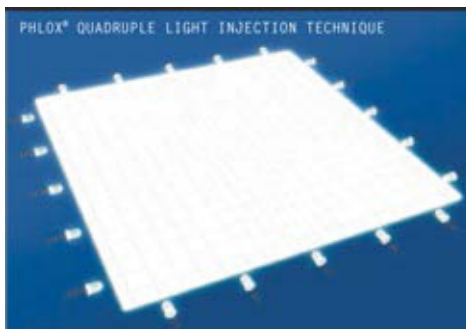
CLASS 0: NO RISK (CIE S2009:2002/NF EN 62471)

Each PHLOX Backlight is provided with:

- 24 months warranty
- Certificate of uniformity and luminance
- Seal of quality on the back

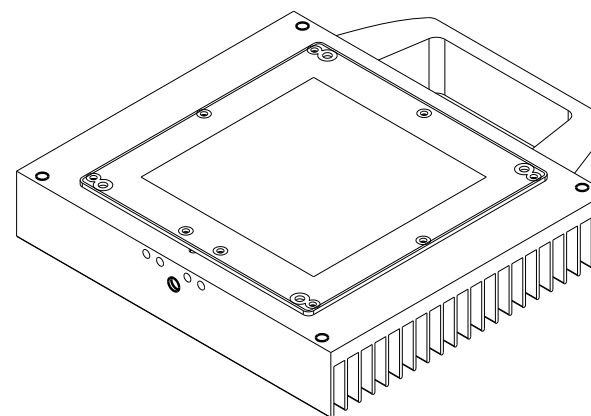
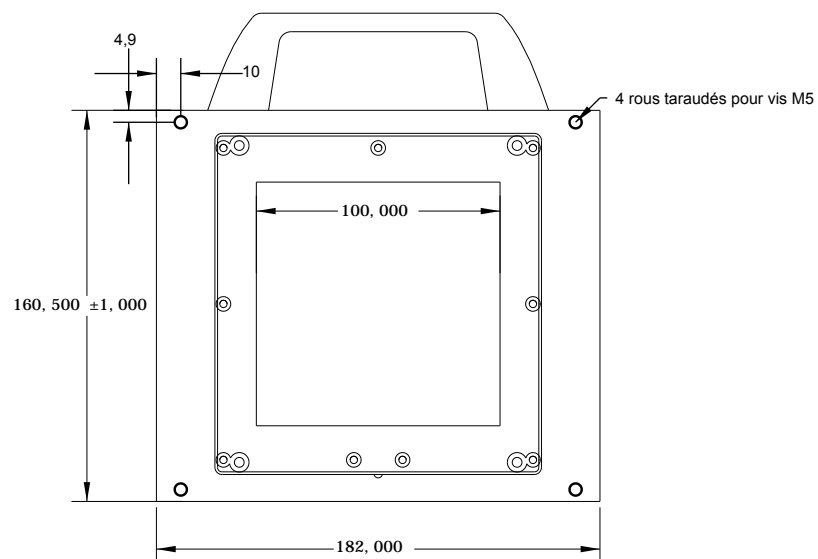
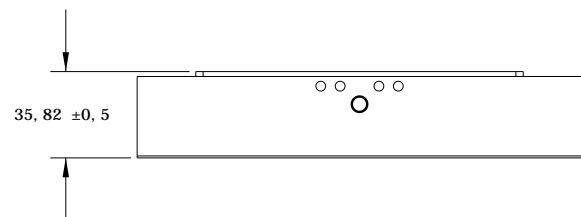
February 13 2018

HSC Backlights by PHLOX®, designed for the Phantom® High Speed Camera offer the best luminance on the market.



INNOVATION

PHLOX® uses optical processes: a PMMA pipe lighted by a linear source made up of LED (Light Emitting Diodes). Our manufacturing process (CO2 laser) enables us to combine refraction and diffusion which improves backlight luminance. Up to 90% of the light injected can be reemitted on the surface. Thanks to the use of mathematical models, PHLOX® emits light in a determinist and perfectly controlled manner



PROPRIÉTÉ DE PHLOX SA- REPRODUCTION INTERDITE SAUF ACCORD ÉCRIT

PHLOX-LEDW-BL-100X100-HSC-Q-1R-24V

TEL: 04 42 90 76 20

