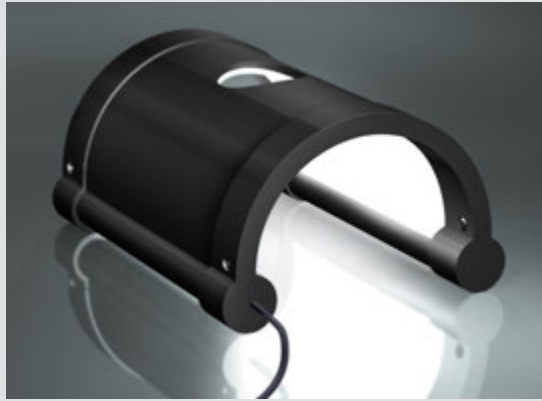


A VISION
AHEAD



HOW TO READ THE PRODUCT KEY

Manufacturer	Source colour	Light Output Area/Length	Injection process	Input voltage
PHLOX	LEDW	TUH31	157x100	LLUB - D - 1R - 24V
Source type	Product type	Range	Number of light sources' rows per cicu	

PHLOX® EXCLUSIVE LIGHT PROCESS
WORLDWIDE PATENT ISSUED

EXCLUSIVE TECHNOLOGY

**Uniform illumination
for cylindrical and/or reflective objects**

Phlox® Tunnel light 157x100

PHLOX - LEDW - TUH31 - 157x100 - LLUB - D - 1R - 24V

Illumination

Luminance minimum
Source Type
Colour Temperature
Expected Life

≥3 500 cd/m² continuous mode
White LED
6500°K (+/- 500)
> 50 000 hours

Electrical

Input Voltage
Input Current
Cable length
Connector
Cable pinout
CE Conformity

24 VDC (continuous mode)
≤370 mA (continuous mode)
2 M - Ø 2.7 mm (6.56 ft - Ø 0.10")
None
±
Yes

Outer unit

L x W x H
Housing Material
Weight
Mounting

140 x 112 x 78 mm (5.51 x 4.41 x 3.07")
Black Composite Duraform® HST
300 g (10.58 oz)
4 mounting holes M4

PHLOX® introduces this **uniform illumination system** for cylindrical and/or reflective objects.

Environmental

Max. Operating Humidity
Operating Temperature
Storage Temperature
Shelf life

95% non-condensing
50°C (122°F) max
60°C (140°F) max
12 months from date of purchase

Do not cover the light when it's switched on.

DESIGNED

FOR YOUR APPLICATION

Bottle inspection (glass and plastic)
Particle measurement
Picture digitalization
Dimensional control
Shaping control
Quality control with transparency.

& YOUR INDUSTRIAL SECTOR

Glassmaking
Pharmaceutical/Cosmetics
Automotive
Agribusiness
Electronics
Aeronautics and space.

Accessories

LED Dimmer: 28V-5A very compact and easy to use
Product key: PHLOX DIM LIGHT

Power supply: 110V and 220V
Product key: ALIM-24V-2.5A60WEU or ALIM-24V-2.5A60WUS

LED Strober: 28V - 5A (up to 40A in pulse mode)
Pulse width between 2µs and 10ms
Product key: PHLOX STROBE LIGHT



CLASS 0: NO RISK (CIE S2009:2002/NF EN 62471)

RoHS directive compliant

Each PHLOX Backlight is provided with:

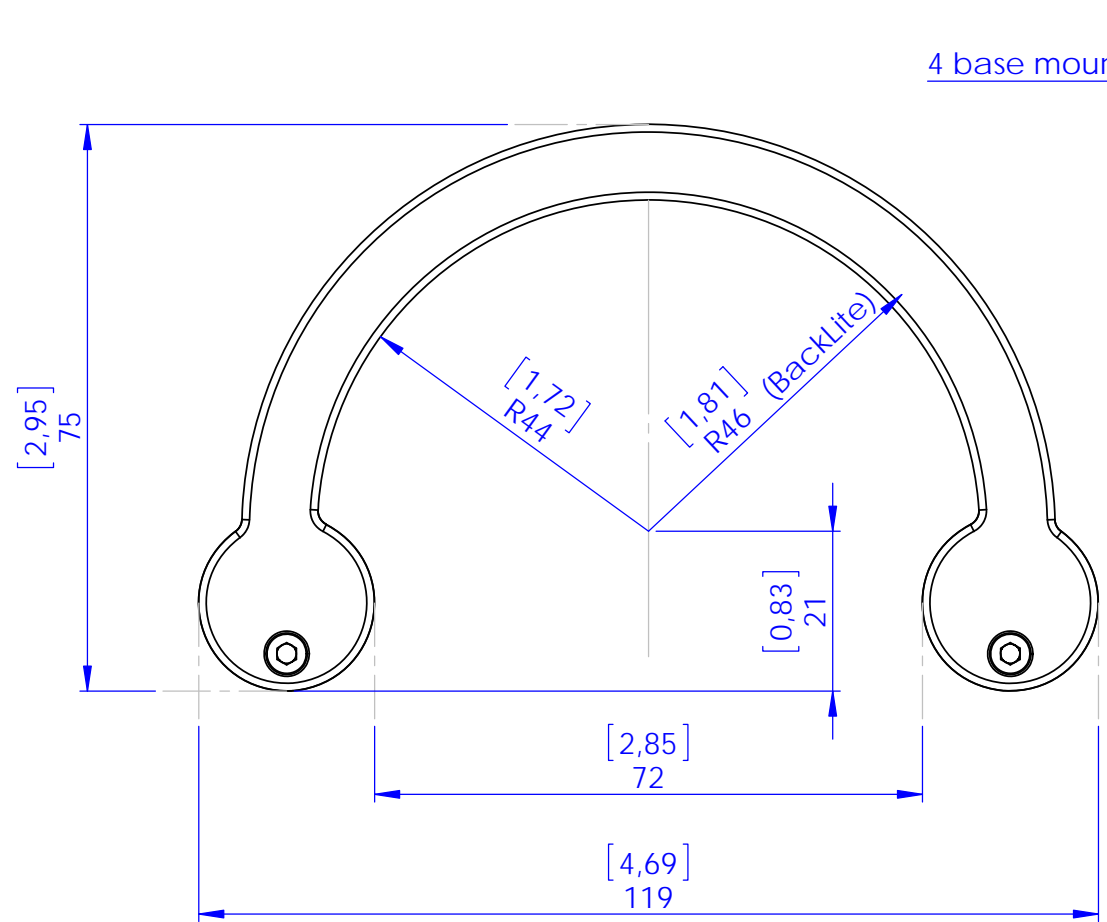
- 24 months warranty
- Certificate of uniformity and luminance
- Seal of quality on the back

Feb 28, 2018

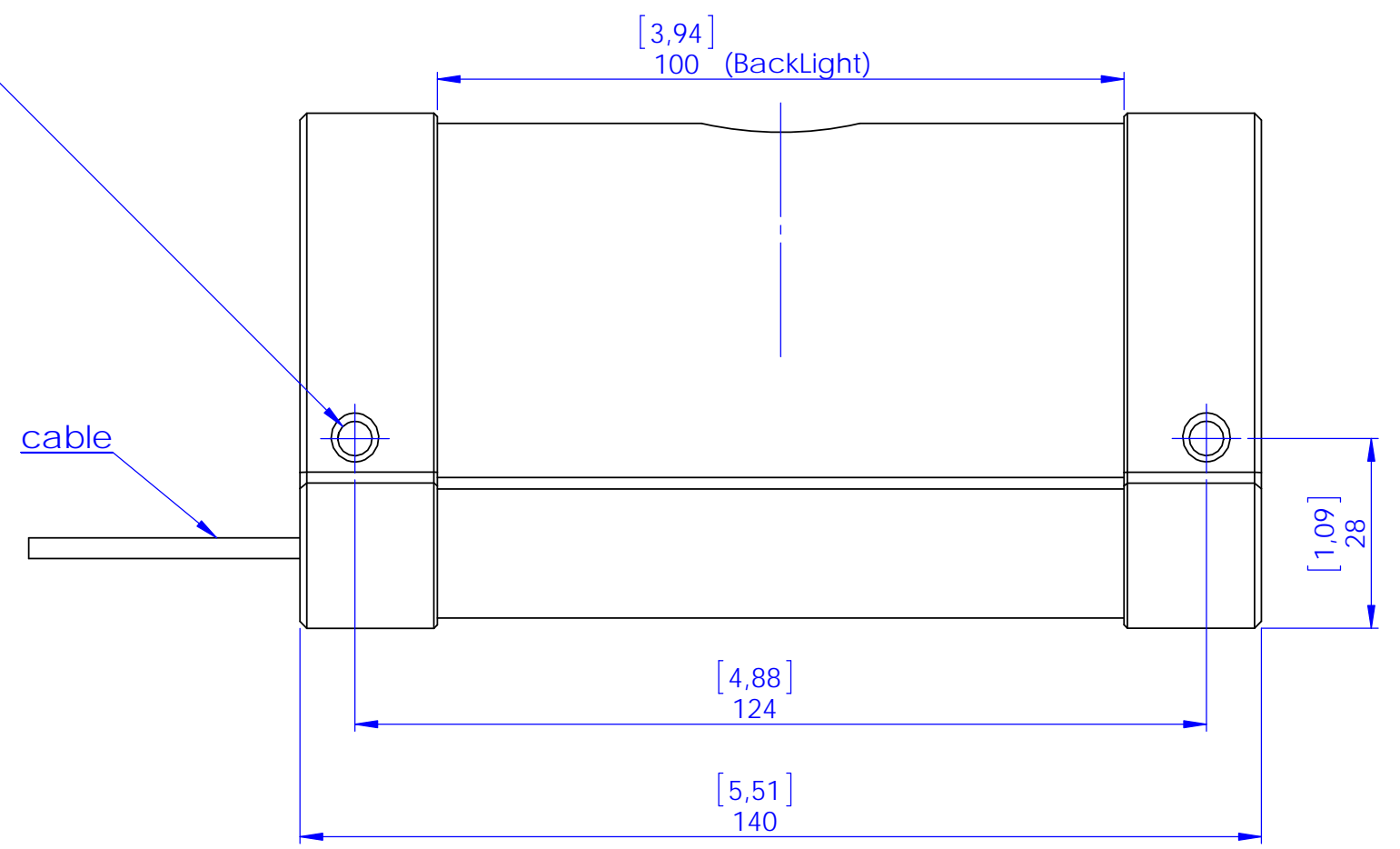
PHLOX • 8 rue Louis Berton - Quartier de l'Enfant 13100 AIX-EN-PROVENCE - FRANCE

Tel : +33 (0)4 42 90 76 20 - e-mail: info@phlox-gc.com

www.phlox-gc.com



4 base mounting holes $\varnothing 5$ [0,20]



31 mm hole camera



Ind :	Description	Dessiné par	Vérifié par	Approuvé par	Date
Echelle : 1:1	Tolérance générale : +/- 1 mm	Matière :	Général :		
	Rugosité générale :	Masse :	Traitement :		
		PROPRIETE DE PHLOX SA- REPRODUCTION INTERDITE SAUF ACCORD ECRIT			
		TUH31W157X100D24LU			
TEL: 04 42 90 76 20		Folio		Ind. A	
FAX: 04 42 90 76 21		1/1		A3	